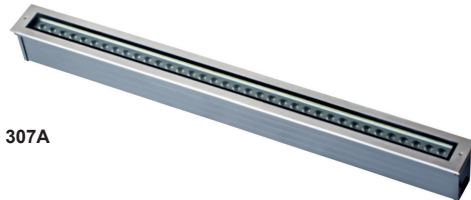
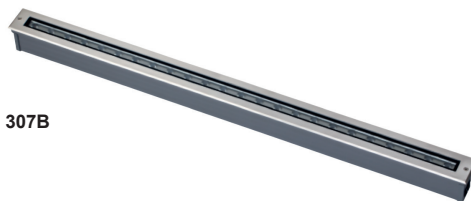


44-GROUNDSTAR

LED GROUNDSTAR



307A



307B

- Housing** Die-cast aluminum with stainless steel face plate
- Diffuser** Tempered glass
- Connections** Male & female cable
- Light Source** Lite-Tech LED module powered by Cree
- Benefits**
 - Corrosion resistant
 - Instant on/off
 - Excellent heat dissipation
 - 50% less power consumption than traditional light sources
 - High impact resistance

DESCRIPTION

GROUNDSTAR series are robust and compact luminaires use for outdoor applications. It provides ground level illumination by having the lights pointed up from the ground. The intent of such lights is to highlight points in the outdoor places such as architectural features or guide lights for walkways or paths.

APPLICATION

This inground lights are mainly used for areas such as building facades, monuments, architectural marks, landscape.

SPECIFICATION

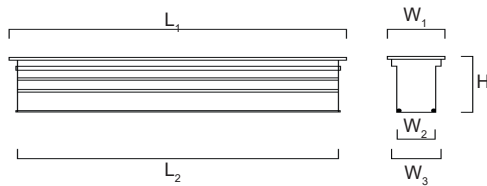
	44-GROUNDSTAR 307A 35W	44-GROUNDSTAR 307B 24W
LED Chip	Cree	Cree
LED Driver	Built-in	Built-in
Wattage	35W	24W
Lumen@Source*	4550 lm	3120 lm
CCT**	3000K / 4000K / 6500K	3000K / 4000K / 6500K
Beam Angle	60°	60°
CRI (Ra)	>80 and 5 SDCM	>80 and 5 SDCM
LED Life	50,000 hrs / L70	50,000 hrs / L70
Working Ambient Temperature	55°C	55°C

*Luminous Flux tolerance ±5% / **CCT Tolerance ±5%

Data is subject to change without notice.



SCHEMATIC



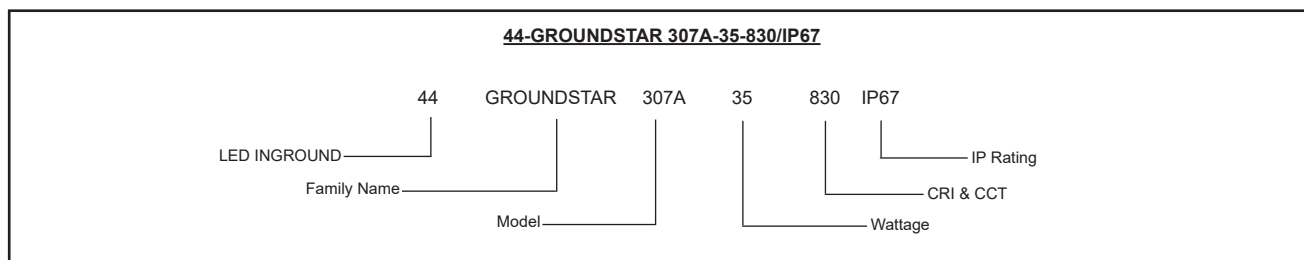
ORDERING CODE	L ₁	L ₂	W ₁	W ₂	W ₃	H
44-GROUNDSTAR 307A	1000	990	90	62	78	105
44-GROUNDSTAR 307B	1000	991	63	45	57	76

Dimensions are in mm

ORDERING GUIDE

44-GROUNDSTAR 307A-35-830	35W	44-GROUNDSTAR 307B-24-830	24W
44-GROUNDSTAR 307A-35-840	35W	44-GROUNDSTAR 307B-24-840	24W
44-GROUNDSTAR 307A-35-865	35W	44-GROUNDSTAR 307B-24-865	24W

ORDERING EXAMPLE



LED INGROUND GROUNDSTAR 307A-35-830/IP67

Data is subject to change without notice.