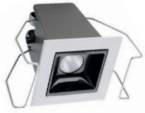
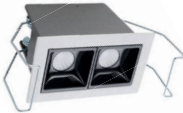


32-22GRILL

LED SPOTLIGHT



22GRILL-02



22GRILL-04



22GRILL-10



22GRILL-20



| | |
|---------------------|--|
| Housing | Die-cast aluminum |
| Reflector | Aluminum + ABS plastic |
| Diffuser | Moulded acrylic frosted |
| Light Source | Lite-Tech LED module powered by Cree |
| Benefits | <ul style="list-style-type: none"> - Breakthrough system cost - Good quality and light performance - Uniformity in lighting - No UV and thermal emissions - Easy installation |

DESCRIPTION

A recessed mounted, cost-effective, integrated LED linear grill module with good quality of light that's easy to suit any application with good aesthetic look.

APPLICATION

Can be used in a wide range of applications from Residential to Commercial spaces.

SPECIFICATION

| | 32-22GRILL-02 2W | 32-22GRILL-04 4W | 32-22GRILL-10 10W | 32-22GRILL-20 20W |
|-----------------------------|---------------------|---------------------|----------------------|----------------------|
| LED Chip | Cree | Cree | Cree | Cree |
| LED Driver | Built-in | Built-in | Built-in | Built-in |
| Wattage | 2W | 4W | 10W | 20W |
| Lumen@Source* | 260 lm | 520 lm | 1300 lm | 2600 lm |
| Beam Angle | 45° | 45° | 45° | 45° |
| CCT** | 3000K / 4000K | 3000K / 4000K | 3000K / 4000K | 3000K / 4000K |
| CRI (Ra) | >80 and 5 SDCM | >80 and 5 SDCM | >80 and 5 SDCM | >80 and 5 SDCM |
| LED Life | 50,000 hrs / L70 | 50,000 hrs / L70 | 50,000 hrs / L70 | 50,000 hrs / L70 |
| Working Ambient Temperature | 50°C | 50°C | 50°C | 50°C |

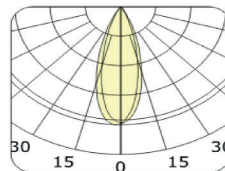
*Luminous Flux tolerance ±5% / **CCT Tolerance ±5%

Data is subject to change without notice.



POLAR DIAGRAM

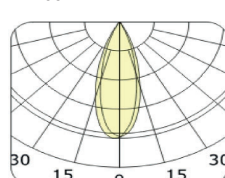
LB409-2W



| Dist(m) | Enrad(r) | Dn(Dv, B(m)) | S. B(sq.m) | Eav. B(lx) |
|---------|----------|--------------|------------|------------|
| 1.0 | 988.99 | 0.59(0.59) | 0.3 | 439.20 |
| 2.0 | 247.25 | 1.18(1.17) | 1.1 | 109.80 |
| 3.0 | 109.89 | 1.78(1.75) | 2.5 | 48.80 |
| 4.0 | 61.81 | 2.37(2.35) | 4.5 | 27.45 |
| 5.0 | 39.56 | 2.96(2.94) | 7.0 | 17.57 |

Beam Angle(B): H33.0 V32.7 Field Angle(F): H38.3 V38.0

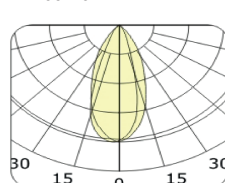
LB409-4W



| Dist(m) | Enrad(r) | Dn(Dv, B(m)) | S. B(sq.m) | Eav. B(lx) |
|---------|----------|--------------|------------|------------|
| 1.0 | 988.99 | 0.59(0.59) | 0.3 | 439.20 |
| 2.0 | 247.25 | 1.18(1.17) | 1.1 | 109.80 |
| 3.0 | 109.89 | 1.78(1.75) | 2.5 | 48.80 |
| 4.0 | 61.81 | 2.37(2.35) | 4.5 | 27.45 |
| 5.0 | 39.56 | 2.96(2.94) | 7.0 | 17.57 |

Beam Angle(B): H33.0 V32.7 Field Angle(F): H38.3 V38.0

LB409-20W



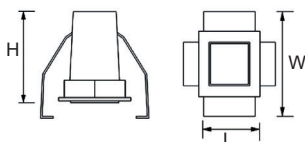
| Dist(m) | Enrad(r) | Dn(Dv, B(m)) | S. B(sq.m) | Eav. B(lx) |
|---------|----------|--------------|------------|------------|
| 1.0 | 2342.05 | 0.83(0.61) | 0.4 | 951.17 |
| 2.0 | 585.51 | 1.66(1.23) | 1.7 | 249.29 |
| 3.0 | 260.23 | 2.50(1.84) | 3.9 | 106.80 |
| 4.0 | 146.38 | 3.33(2.46) | 7.0 | 60.07 |
| 5.0 | 93.88 | 4.16(3.07) | 10.9 | 38.45 |

Beam Angle(B): H45.2 V34.1 Field Angle(F): H55.4 V45.9

ADDITIONAL OPTIONS

DALI Digital Dimming

SCHEMATIC



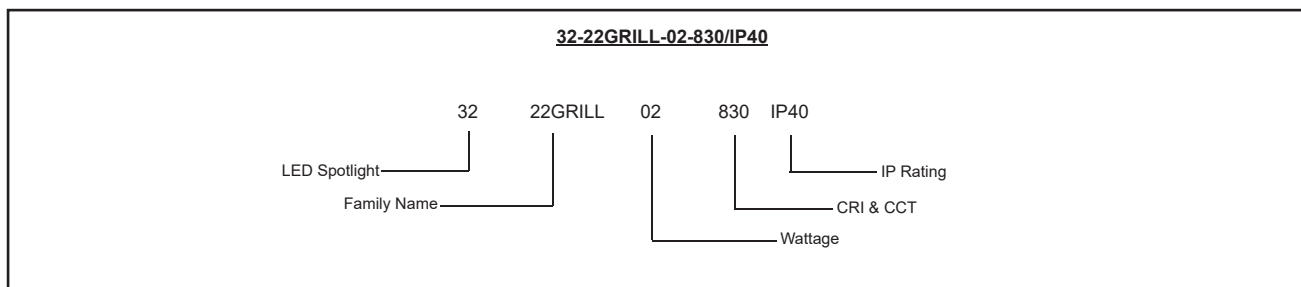
| ORDERING CODE | L | W | H | cut-out LXW |
|---------------|-----|----|----|-------------|
| 32-22GRILL-02 | 45 | 49 | 50 | 37X37 |
| 32-22GRILL-04 | 75 | 49 | 50 | 68X37 |
| 32-22GRILL-10 | 147 | 49 | 50 | 140X37 |
| 32-22GRILL-20 | 280 | 49 | 50 | 273X37 |

Dimensions are in mm

ORDERING GUIDE

| | | | | | | | |
|-------------------|----|-------------------|----|-------------------|-----|-------------------|-----|
| 32-22GRILL-02-830 | 2W | 32-22GRILL-04-830 | 4W | 32-22GRILL-10-830 | 10W | 32-22GRILL-20-830 | 20W |
| 32-22GRILL-02-840 | 2W | 32-22GRILL-04-840 | 4W | 32-22GRILL-10-840 | 10W | 32-22GRILL-20-840 | 20W |

ORDERING EXAMPLE



LED SPOTLIGHT 22GRILL-02-830/IP40

Data is subject to change without notice.