

44-GROUNDSTAR

LED INGROUND



Housing	6063 Aluminum alloy molding
Light Source	Osram
Benefits	<ul style="list-style-type: none">- Light body is designed to increase heat dissipation space- Instant on/off- Impact & friction resistant- 50% less power consumption than traditional light sources- Precise optic design provides exceptional light control and precise distribution of light
Option	RGB version available

DESCRIPTION

GROUNDSTAR series are robust and compact luminaires use for outdoor applications. It provides ground level illumination by having the lights pointed up from the ground. The intent of such lights is to highlight points in the outdoor places such as architectural features or guide lights for walkways or paths.

APPLICATION

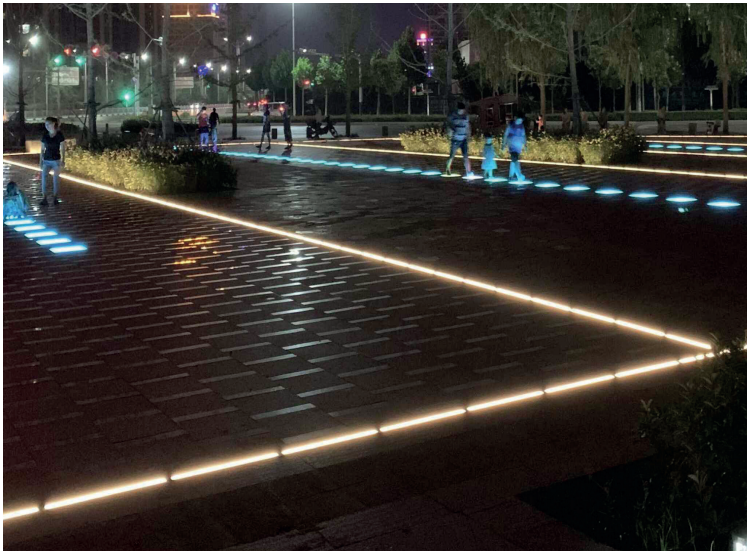
This in-ground lights are mainly used for areas such as building facades, monuments, architectural marks, landscape.

SPECIFICATION

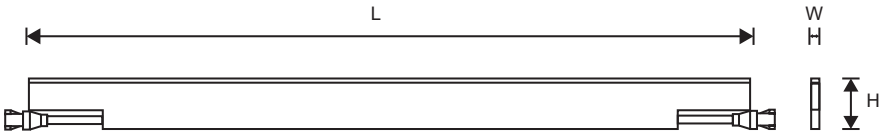
	44-GROUNDSTAR 2340 10W	44-GROUNDSTAR 2340 15W
LED Chip	Osram	Osram
LED Driver	DC 24V - Meanwell	DC 24V - Meanwell
LED Quantity	288 pcs	288 pcs
Wattage	10W	15W
Lumen@Source*	1000 lm	1500 lm
CCT**	3000K / 4000K / 6500K	3000K / 4000K / 6500K
Beam Angle	>120°	>120°
CRI (Ra)	>80	>80
LED Life	50,000 hrs	50,000 hrs
Working Ambient Temperature	55°C	55°C

*Luminous Flux tolerance ±5% / **CCT Tolerance ±5%

Data is subject to change without notice.



SCHEMATIC



ORDERING CODE

LW H

44-GROUNDSTAR 234010001271

Dimensions are in mm

ORDERING GUIDE

44-GROUNDSTAR 2340-10-830	10W	44-GROUNDSTAR 2340-15-830	15W
44-GROUNDSTAR 2340-10-840	10W	44-GROUNDSTAR 2340-15-840	15W
44-GROUNDSTAR 2340-10-865	10W	44-GROUNDSTAR 2340-15-865	15W

ORDERING EXAMPLE

44-GROUNDSTAR 2340-10-830/IP67

44

GROUNDSTAR

2340

10

830

IP67

LED INGROUND

Family Name

Model

Wattage

CRI & CCT

IP Rating

LED INGROUND GROUNDSTAR 2340-10-830/IP67